

# Porcelain Fused to Metal Repair



**COSMEDENT**® *Spreading Smiles*

**COSMEDENT**

401 N. Michigan Ave. Suite 2500, Chicago, IL 60611

**Smiling Patients, Smiling Dentists.**

Helping you succeed with quality products and dedicated support

# Porcelain Fused to Metal Repair

Dr. Bob Margeas



Porcelain fused to metal repair



Application of GINGA-Guard™ light cured resin dam



Micro-etch metal



Cosmedent Clear PorcelEtch on porcelain for 4 minutes. Rinse with copious amounts of water



Silanator on porcelain for only 30 seconds



Complete Primer/Unfilled Resin on both porcelain and metal, cure for 20 seconds



Application of Creative Color Pink Opaque, cure for 20 seconds



Application of Renamel Microhybrid



Renamel Microhybrid cured for 40 seconds. If slight grayness persists, apply additional opaque in the same shade as composite



Application of Creative Color Grey tint to create translucence, cure for 20 seconds



Application of Renamel Microfill same shade as Renamel Microhybrid



Renamel Microfill after 60 second cure



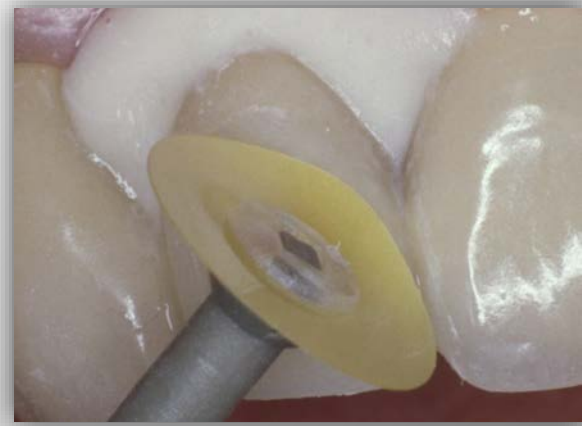
Contour using bur of choice



Characterization : Medium FlexiPoint



Characterization: Superfine FlexiPoint



Polishing: Fine FlexiDisc



Polishing: Superfine FlexiDiscs



Enamelize polishing paste, applied with FlexiBuff



Before



Final restoration

# Porcelain Repair Kit



**SAVE  
15%**

800.621. 6729

[www.cosmedent.com](http://www.cosmedent.com)