

DIASTEMA CLOSURE



COSMEDENT® *Spreading Smiles*

COSMEDENT

401 N. Michigan Ave. Suite 2500, Chicago, IL 60611

Smiling Patients, Smiling Dentists.

Helping you succeed with quality products and dedicated support

DIASTEMA CLOSURE

Dr. Bud Mopper



BONDING ADHESIVES

MICROFILL

HYBRID

NANO

OPAQUE



Optional

(Seldom)



Make sure you are working in a clean, dry surface



If needed, use a FlexiDiamond Strip. If at the gingival, use a narrow strip, if in the body, use a wide strip



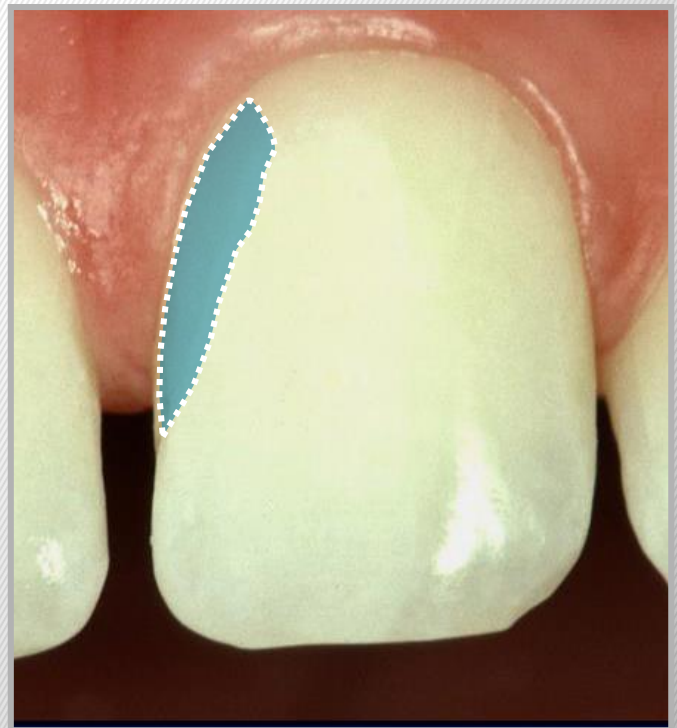
Measure for symmetry



Etch the tooth to middle third of tooth both facially and lingually



NOTE: Frosty Etched Surface



Notice lack of etch.



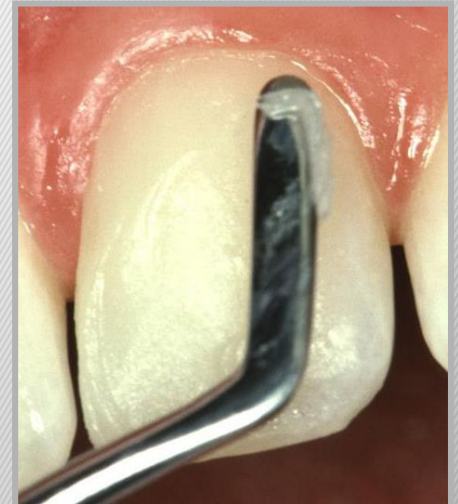
Bonding agent after curing for 20 seconds



Renamel
Microfill rolled
into a
convenience
form



Facial
application of
Microfill



Facial
application of
Microfill.

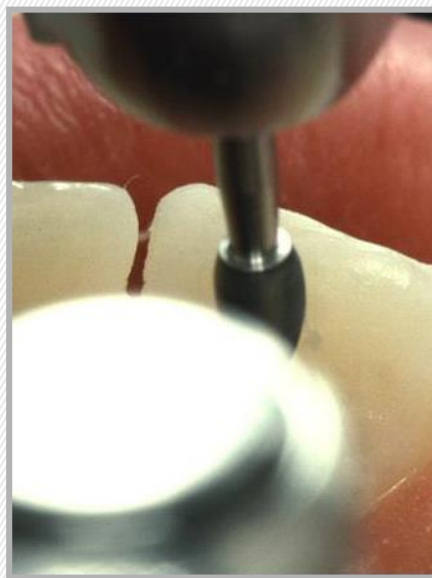


Labial Wall Cured



Application of
Renamel
Microfill to
lingual shelf

***Measure before finishing**



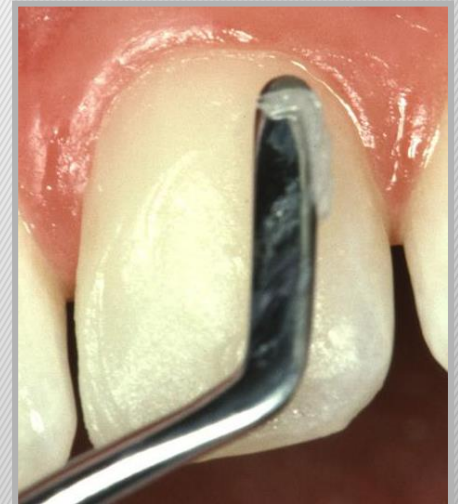
Bonding agent after curing for 20 seconds



Renamel
Microfill rolled
into a
convenience
form



Facial
application of
Microfill



Facial
application of
Microfill.



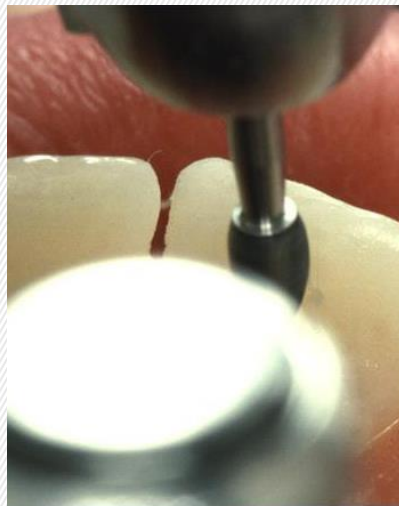
Lingual view – notice the lingual shelf



Application of Renamel Microfill to lingual shelf



Measure
before
finishing



Contour using the ET9 (facial) and
OS1 (lingual)

FlexiDisc
Medium



FlexiDisc Fine

FlexiStrips



After etching and placement of bonding agent, Renamel Microfill is placed and sculpted, using the 8A instrument without matrix



After polymerization of facial surface, apply a layer of Renamel Microfill to the lingual surface



Use the IPC-T to contour material and remove any extra composite interproximally.



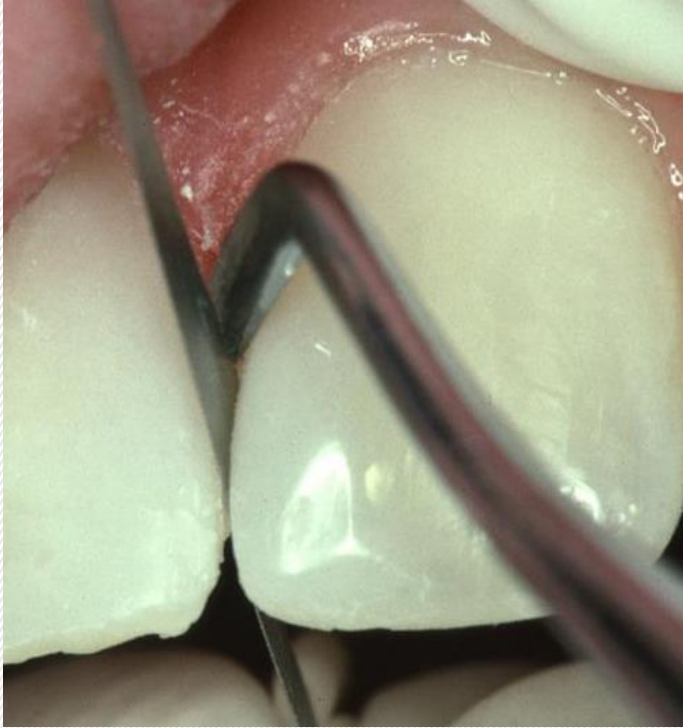
After etching and placement of bonding agent, Renamel Microfill is placed and sculpted, using the 8A instrument without matrix



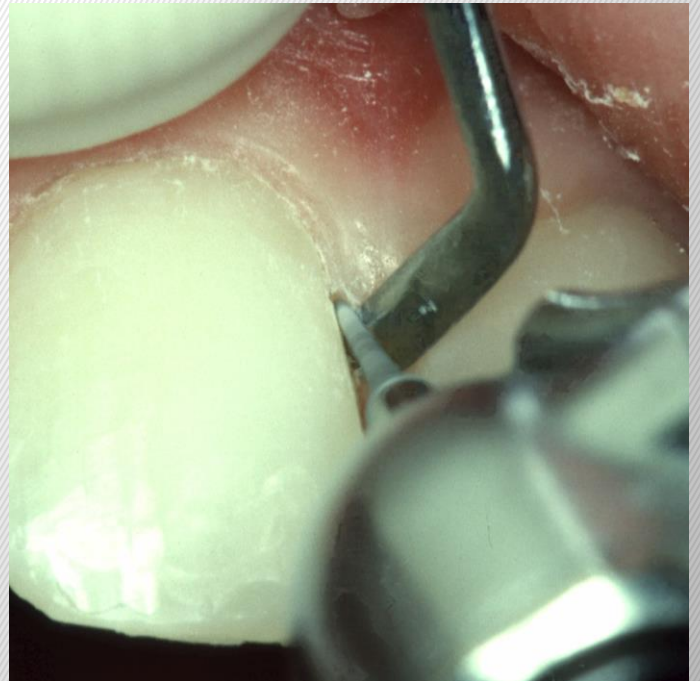
After polymerization of facial surface, apply a layer of Renamel Microfill to the lingual surface



Use the IPC-T to contour material and remove any extra composite interproximally.



Using the 8A instrument we torque the teeth and insert the FlexiDiamond Strip



Use the 8392-016 to define gingival margins. Use the 8A instrument to retract the tissue, Brasseler's 8392-016 bur is used to refine the subgingival margin.



Final polish accomplished with FlexiDiscs, FlexiPoints, Enamelize polishing paste and FlexiBuffs

COMPOSITE REPAIRS - MATERIALS LIST

- FlexiDiamond Strip
- Cosmedent Complete
- Renamel Microfill
- Cosmedent Instruments
- FlexiDisc System
- Enamelize Polishing Paste



Renamel Microfill Starter Kit

Try 5 of our most popular Renamel Microfill shades

<http://www.cosmedent.com/products/renamel-microfill-starter-kit/>