

**COSMEDENT®**

*Spreading Smiles™*



## DIRECT COMPOSITE VENEER

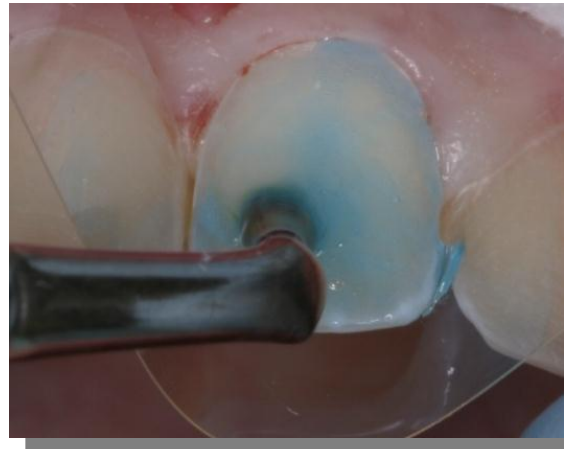
Dr. Buddy Mopper



Prepped veneers



Check the prep from the Incisal, to make sure you have prepped far enough interproximally without breaking contact. This will help hide any margins



Apply etchant



Bonding adhesive (Cosmedent Complete) in place



Application of thin layerel Microhybrid, to help block out the underlying color



Removing excess and refining gingival margins with the IPC-T instrument



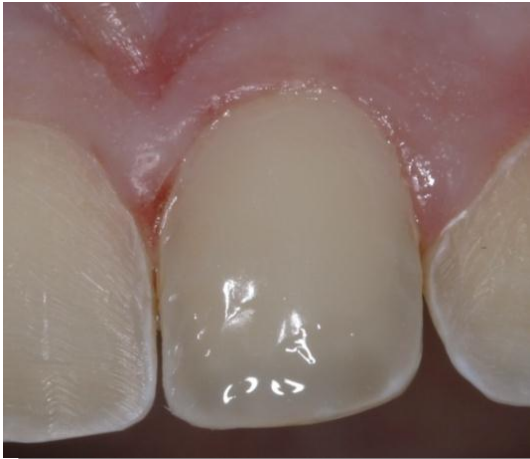
Microhybrid layer cured



Notice the thickness of the hybrid layer



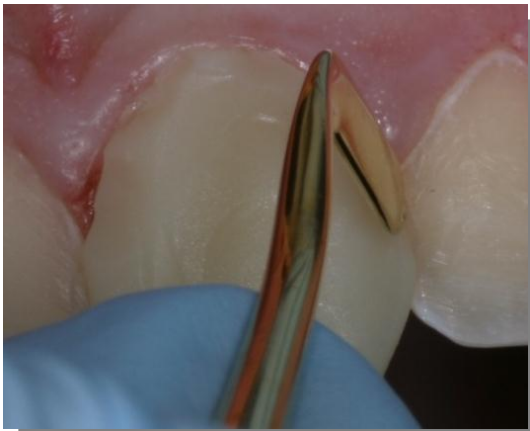
Application of Creative Color Grey Tint to recreate the Incisal translucency.



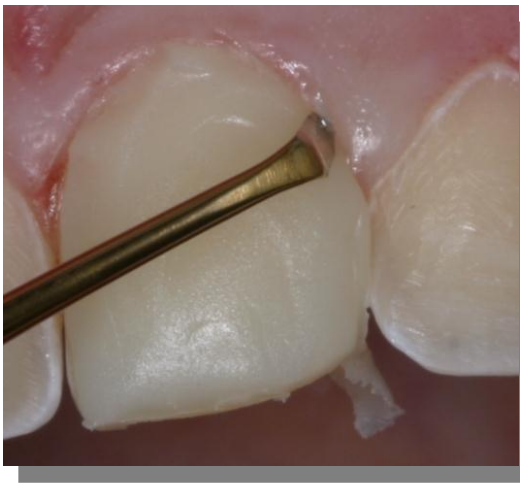
Notice the artistic placement of the tint



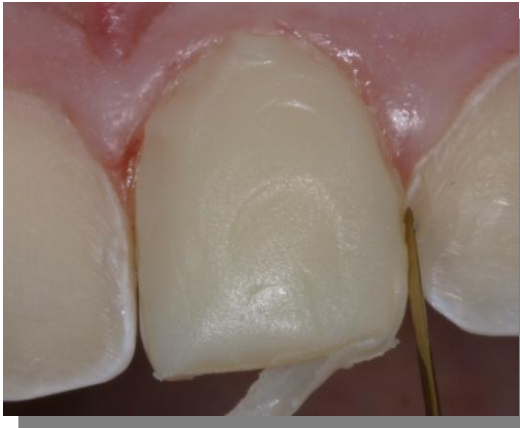
Application of Renamel Microfill



Sculpting the microfill with the Cosmedent 8A instrument



Continued sculpting and placement with the 8A instrument



Defining the interproximal margin with the IPC-T instrument



Using the IPC-T to define the gingival margin



Create lobes and characterize the anterior surface using the multi-use instrument



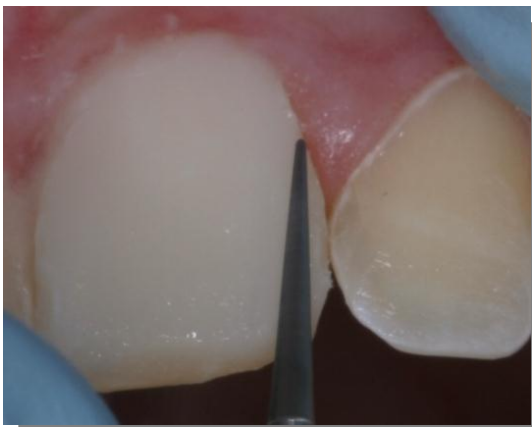
Microfill after 60 second cure



To ensure complete marginal seal, apply a small amount of Microfill to the already cured composite at the gingival margin and sculpt closed with IPC-T



Cure for 60 seconds



Contouring and shaping with the E-T system



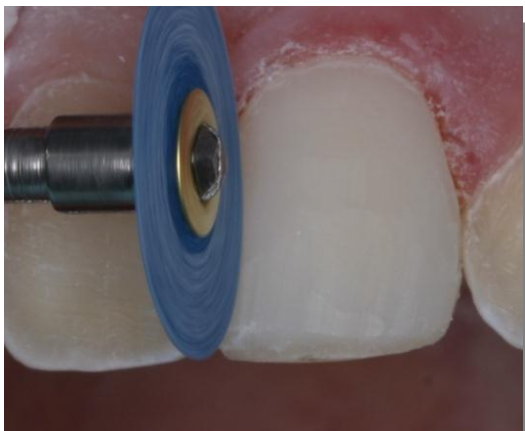
With tissue retracted with an 8A instrument, it is easy to refine the margin with the 8393-012 to get complete marginal integrity



Continue finishing the gingival margins using the 8A instrument to retract the gingival tissue then use the 8392-012, as seen



Using the Flexidisc Medium disc to define Incisal line angle



Using the medium disc to define the interproximal margin and proximal walls



After using the medium Flexipoint to create characterization finish up with the pink superfine point



Use of Flexi Strip Fine/Superfine wide to polish the interproximal contact



Notice the perfect color match



First Central finished





Notice how from the Incisal view you can see how important it is to properly contour your restoration



Finished Case