

CLASS III RESTORATION



COSMEDENT® *Spreading Smiles*

COSMEDENT

401 N. Michigan Ave. Suite 2500, Chicago, IL 60611

Smiling Patients, Smiling Dentists.

Helping you succeed with quality products and dedicated support

CLASS III RESTORATION

Dr. Bud Mopper



Class III



Begin preparation using a 330 Carbide bur.



Clean the interproximal contact with Cosmedent's FlexiDiamond Strip.



Create long bevel with 6862-012 diamond bur.



Notice the uniform 2mm long bevel.



Apply Cosmedent's EnamelEtch well past the long bevel using the #1 brush.



Bonding adhesive in place (Cosmedent Complete.)



Place Renamel Microhybrid A3 to increase value and opaque darkened area.



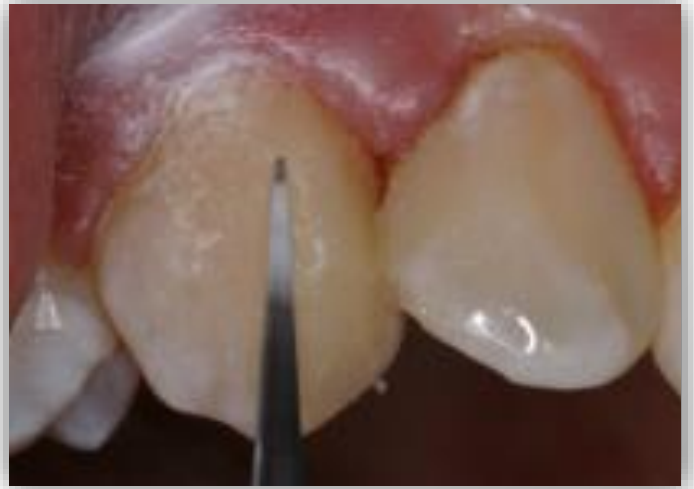
Sculpting of Renamel Microhybrid with Cosmedent's 8AL to the leading edge of the long bevel.



Renamel Microfill A3 rolled into a convenience form



Place Renamel Microfill layer using Cosmedent's 8AL instrument.



Contour restoration using the ET9 carbide bur (moving from composite to tooth.)



FlexiDisc Coarse - blend the microfill margin into the tooth.



FlexiDisc Medium 3/8th - finish at the cervical.



FlexiDisc Medium 5/8th – contour starting from the proximal to create perfect embrasures.



FlexiDisc Fine 5/8th



Retract gingival tissue and reduce excess flash with the 8392-016 bur to



Use the 8A instrument to torque the teeth and gently separate using FlexiDimond Strip



Fine/Super Fine FlexiStrip



Final polish with Enamelize and FlexiBuff disc.



Final Restoration