


THE ROLE OF TRANSLUCENCY
THE CLASS IV (NATURAL LAYERING)
THE CLASS IV (SIMPLIFIED APPROACH)
educationalobjectives



THE ROLE OF TRANSLUCENCY
THE CLASS IV (NATURAL LAYERING)
THE CLASS IV (SIMPLIFIED APPROACH)
educationalobjectives

translucence

Adj
allowing light to pass through partially or diffusely: semi-transparent



high translucence = transparency

translucence

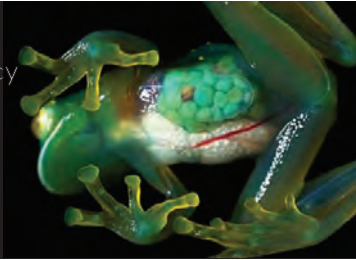
Adj
allowing light to pass through partially or diffusely: semi-transparent



high translucence = transparency
low translucence = opacity

translucence

Adj
allowing light to pass through partially or diffusely; semi-transparent

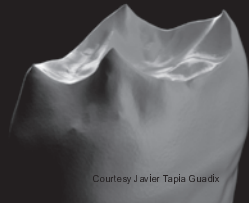


comparative translucence



Dentin is opaque

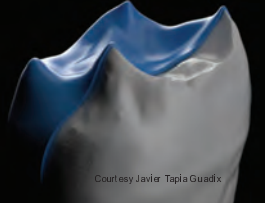
comparative translucence



Dentin is opaque

Dento-Enamel Complex (DEC) is transparent

comparative translucence

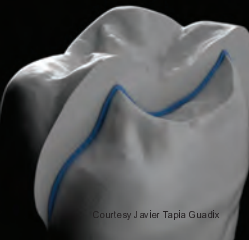


Dentin is opaque

Dento-Enamel Complex (DEC) is transparent

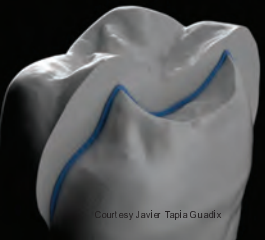
Enamel is highly translucent

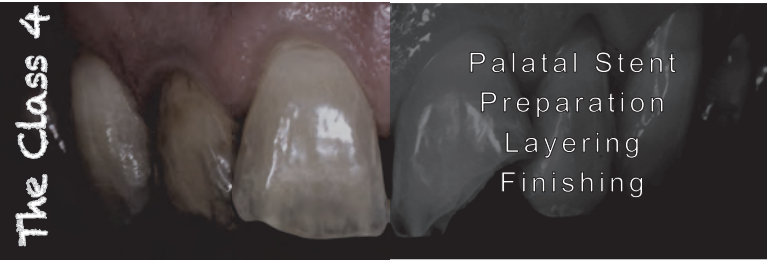
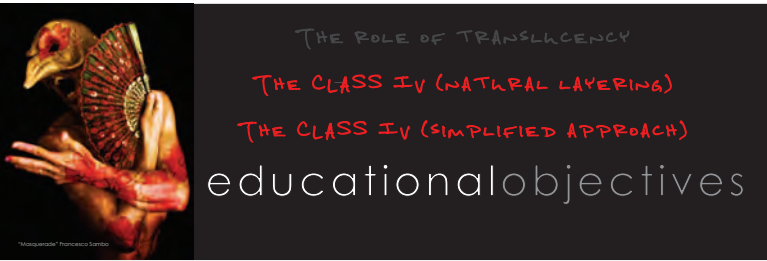
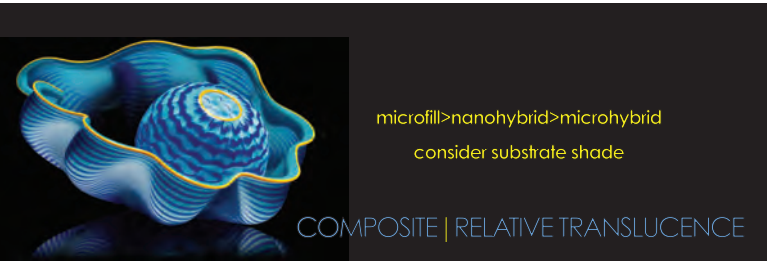
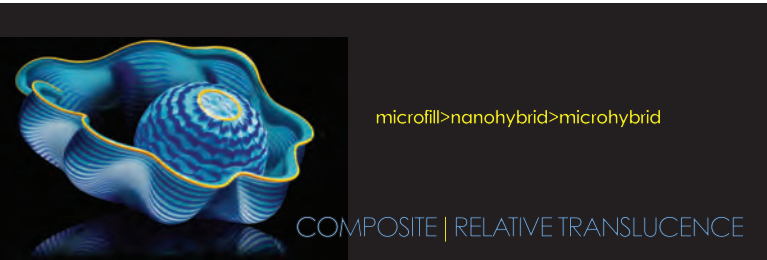
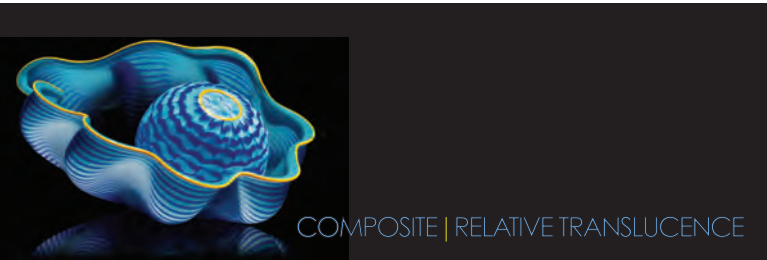
comparative translucence



The requirements
for dentin and enamel composites are very
different in terms of translucence

comparative translucence





CLASS4TYPODONTCASE

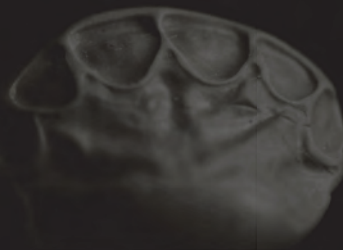


**PALATAL
STENT**

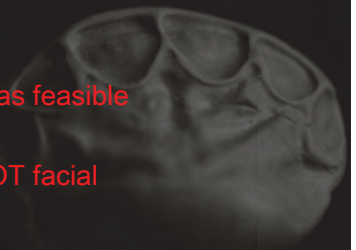


FABRICATED FROM:

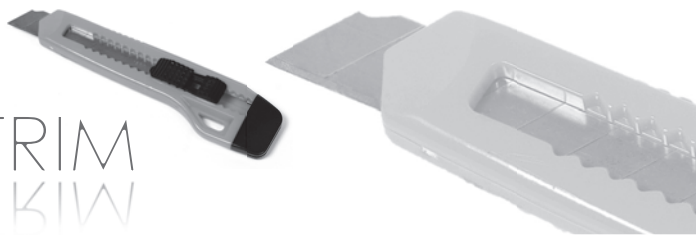
Existing palatal
Diagnostic wax up
Intra-oral mock up



Anterior six teeth
Extends interproximally as far as feasible
Sharp and accurate
Records incisal edge but NOT facial



TRIM
IBIW



TRIM
IBIW



RETRACTABLE CARPET KNIFE
IN LONG AXIS OF TOOTH
BUCCAL ASPECT OF INCISAL EDGE



PALATAL STENT

How much resin to
apply to stent

PROBLEM

How much resin to
apply to stent

TOO MUCH-OVERHANGS | FINISHING ISSUES
TOO LITTLE-VOIDS AND FRACTURE

PROBLEM

Inter-Proximal Carver Long (IPCL)

SCORE

Fill to 2mm apical
to marked line

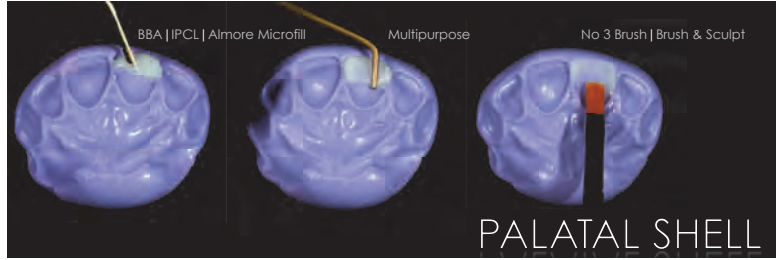
SCORE

Rubber Dam
PTFE (Teflon Tape)

ISOLATE



THE ROLE OF TRANSLUCENCY
THE CLASS IV (NATURAL LAYERING)
THE CLASS IV (SIMPLIFIED APPROACH)
educational objectives



INTERPROXIMAL
MYLAR STRIP



CARRY ASH 6



CONDENSE
MULTIPURPOSE



BLEND
No1 BRUSH
MODELLING RESIN



Dietschi D
Free-hand composite resin restorations:
a key to anterior aesthetics
PRACT PERIODONTICS AESTHET DENT • 1995 • 7 • 15-25

PALATAL SHELL

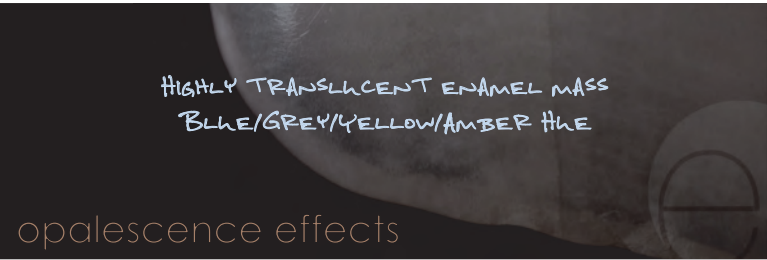
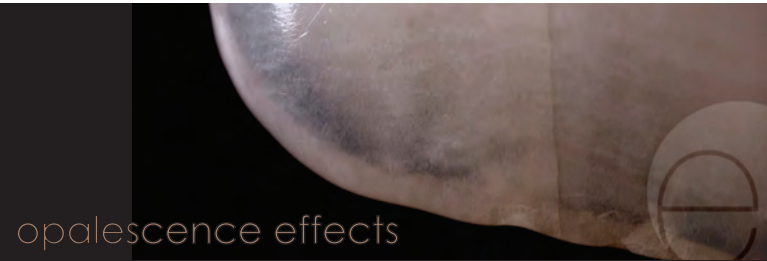


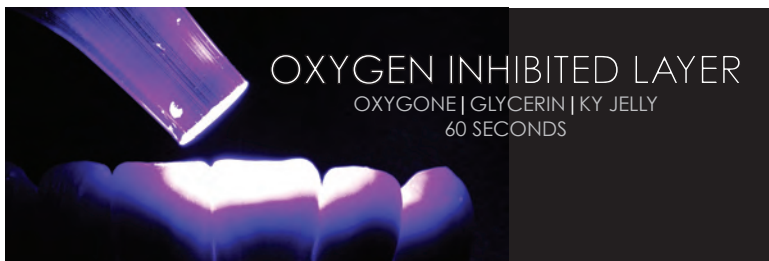
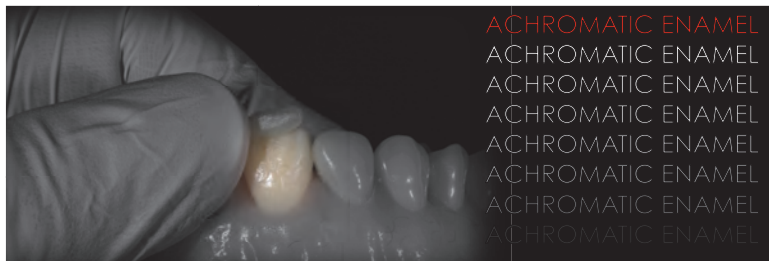
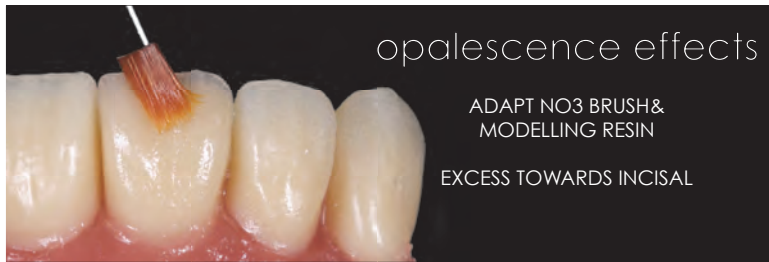
REFINE

No Water
Avoid Tooth Structure
Flexidisc (Cosmedent)
Medium Grit Flame Diamond
1.5 Speed Increasing handpiece (NSK)







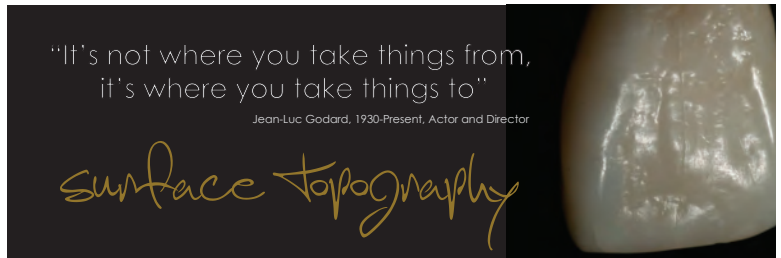


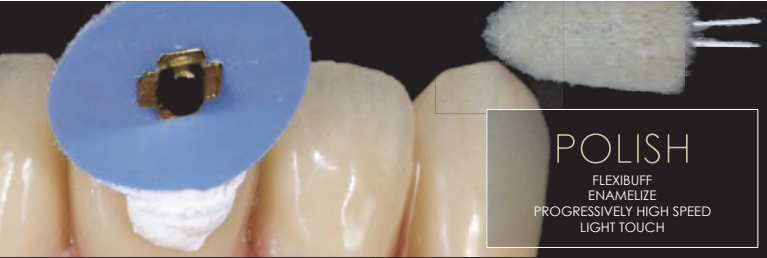


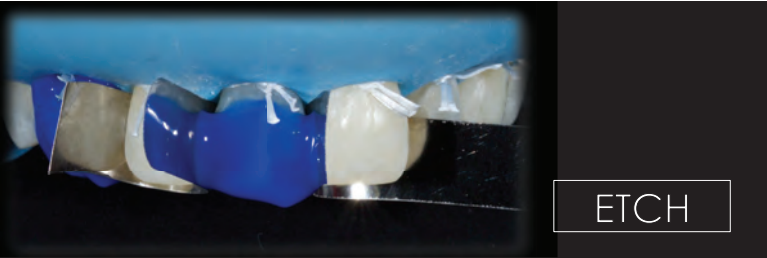
proportion

Tooth Length
Tooth Width
Marginal Ridges
Height of Contour

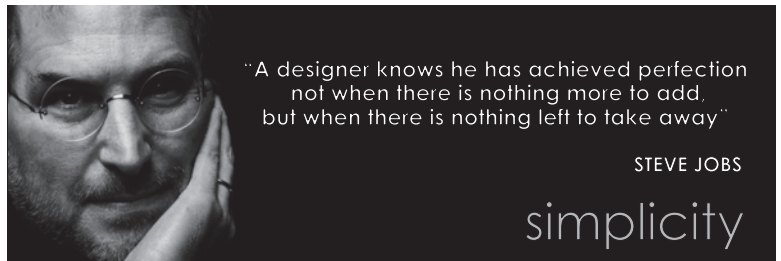
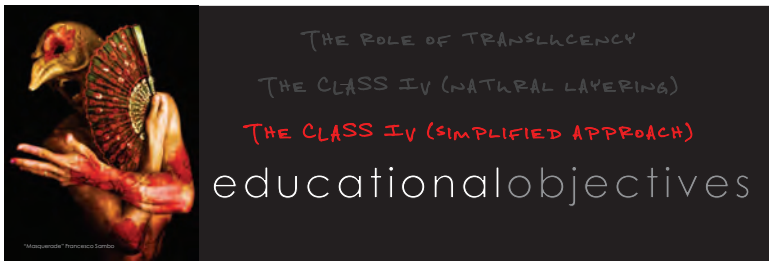














simplified bonding AFTER BUDDY MOPPER

CONCEPT:
Reduced number of shades
Effects created with aid of tints



simplified bonding AFTER BUDDY MOPPER

ADVANTAGES:
Reduced Armamentarium
Time Saving
Operator Ease



simplified bonding AFTER BUDDY MOPPER

APPLICATIONS:
Budget Cases
Multiple Veneers
Transition Phase of FMR
(Anterior Guidance | OVD verification)

PREP:
Palatal chamfer
Facial Bevel
Rounded Line Angles

*Often incisal reduction is unnecessary

SIMPLIFIED BONDING



Chromatic microhybrid
*consider opaque (Creative Color)

SIMPLIFIED BONDING



concave

SIMPLIFIED BONDING



Chromatic Enamel
Microfill (Renamel)
Extend beyond margin
Smooth Finish
Bevel incisally

SIMPLIFIED BONDING



Opalescence Effects
50:50 Violet/Grey mix (Corky Willhite)
Size 1 brush + Modelling resin
Sparing

SIMPLIFIED BONDING



White | Amber | Combination Halo
Number 1 brush

SIMPLIFIED BONDING



Vertical White Striations
*Optional

Thin with Dry Brush

SIMPLIFIED BONDING



Thin layer of high translucence
microfill (IL or SB)
Covers effects only

SIMPLIFIED BONDING



THE PEG LATERAL





