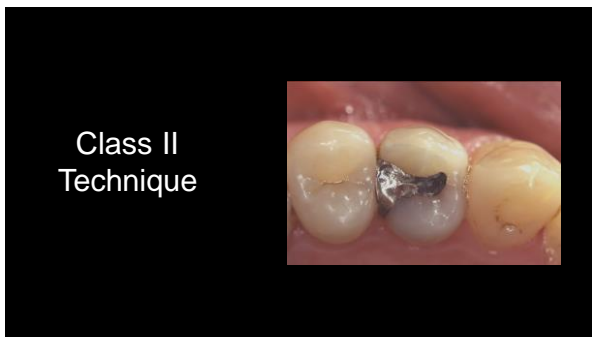


BULK FILL AND  
**CLASS II**

Dr. Dennis Hartlieb



Check occlusion-  
Pre-op

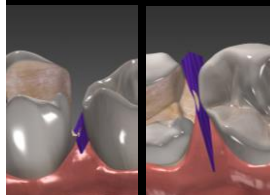
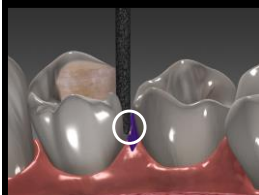
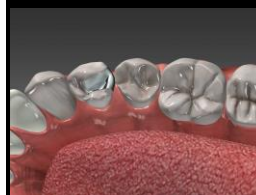


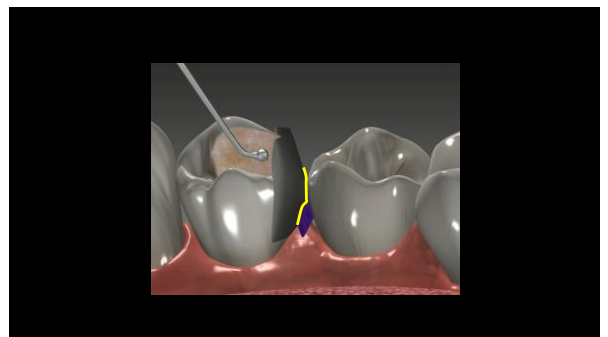
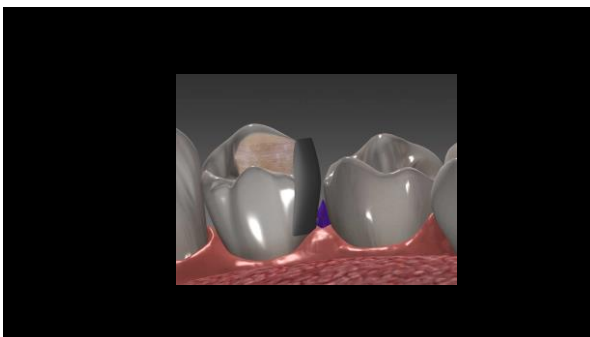
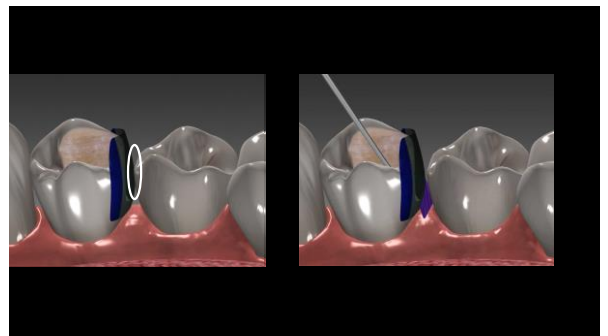
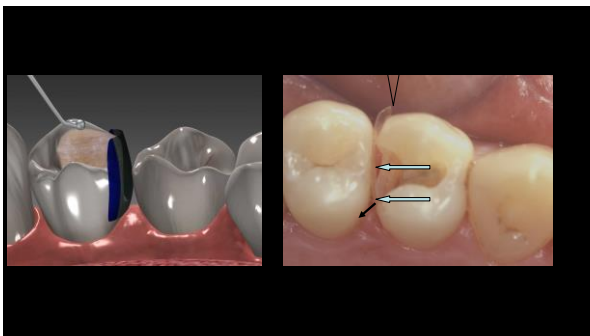
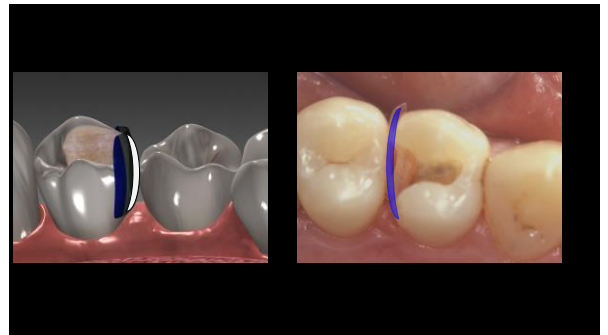
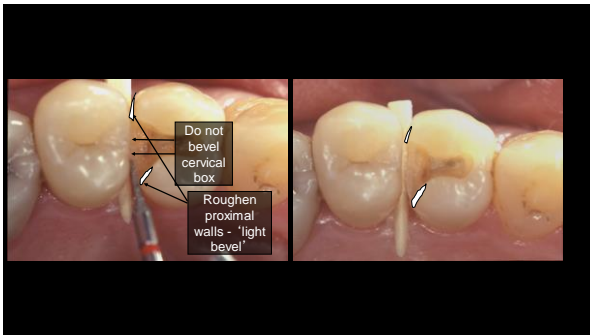
Pre-Wedge

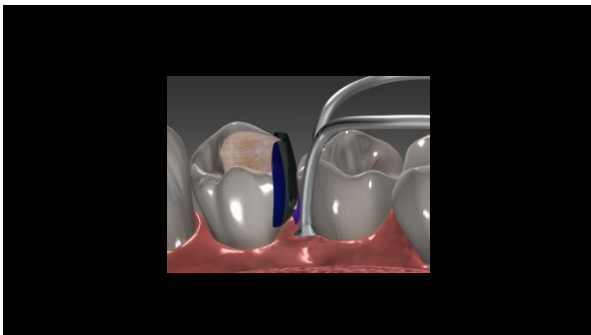
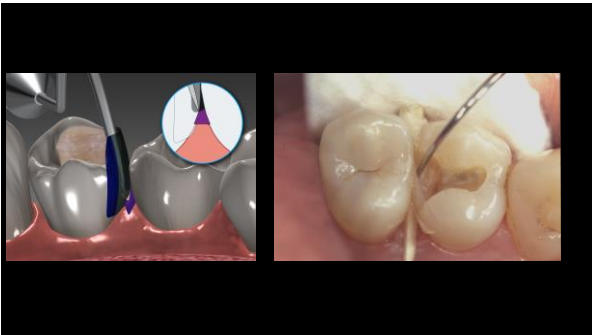
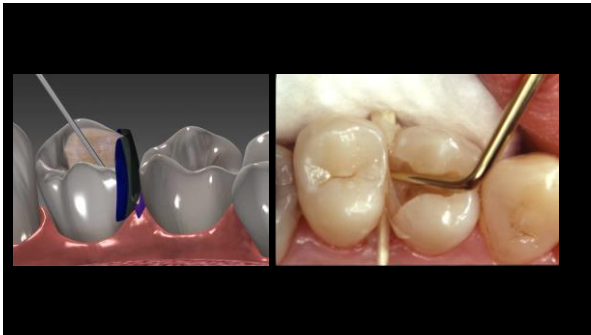
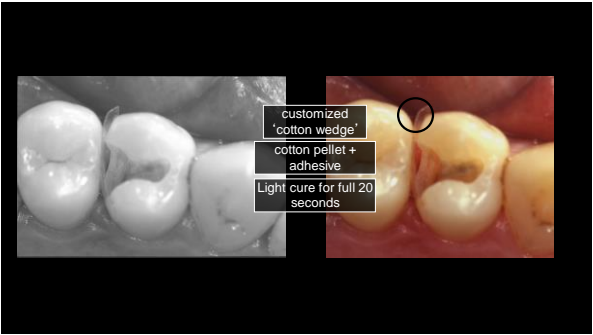
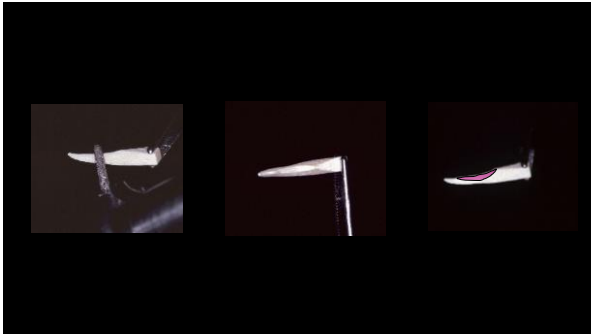


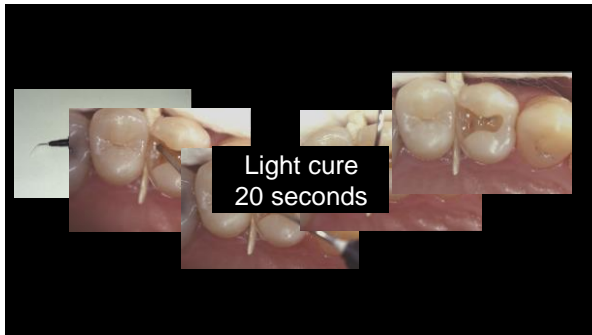
Pre-wedge

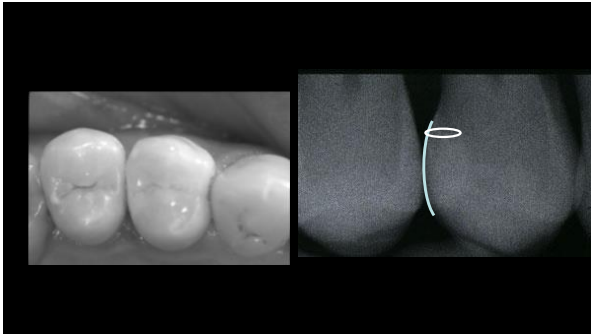
- Begins separating teeth to compensate for thickness of matrix material
- Helps to prevent incidental gingival tissue laceration or rubber dam tearing during prepping
- Bur marks on wedge reveal where contour of wedge needs to be adjusted to allow for full contour of matrix



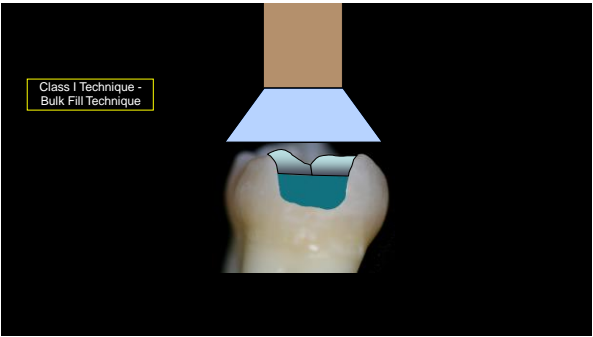
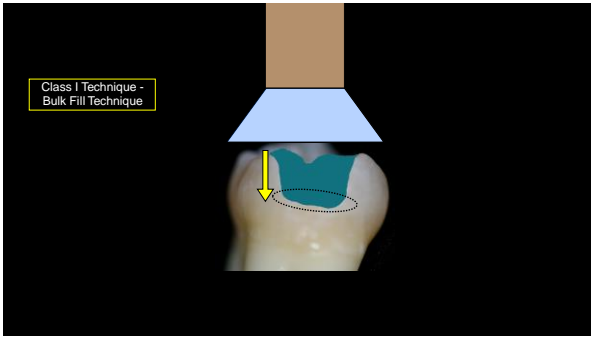
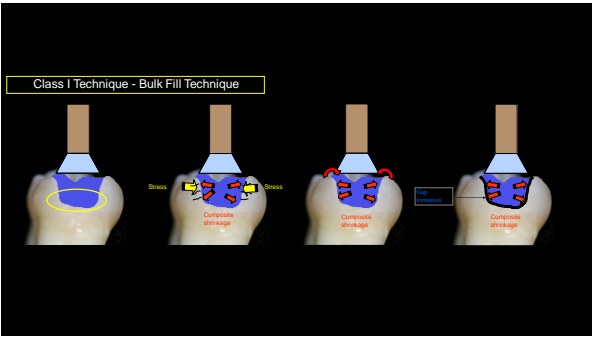








Bulk Fill Composites



## Problems with current bulk fill materials

- Controversy on distance of depth of cure
- Is the manufacturer's results consistent with research?
- Often use highly translucent composites to increase depth of cure which can result in low value restoration

## Overcoming problems with current bulk fill materials using core build-up material like Cosmecore

- Dual cure material ensures adequate cure all the way through
- Great strength of core materials
- Cosmecore flows, does not slump, maintains its position
- Can use more opaque, non-translucent shade of material
- Long track record of success with core materials
- Much more efficient, and potentially stronger restoration using Cosmecore as build-up before final layering material



1. Check occlusal contacts



2. Pre-Wedge



3. Prep Complete

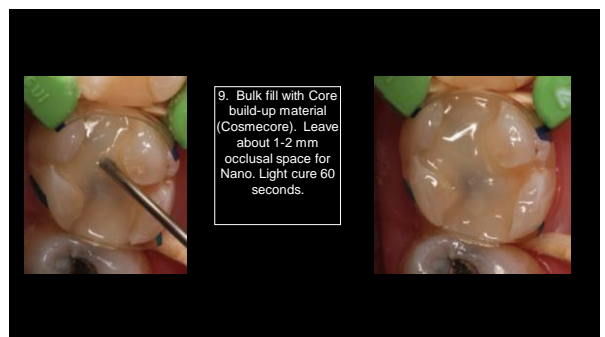
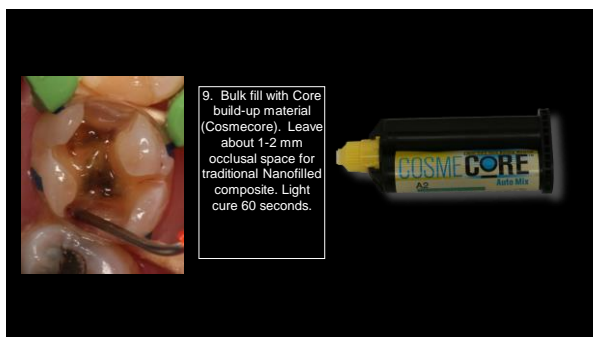
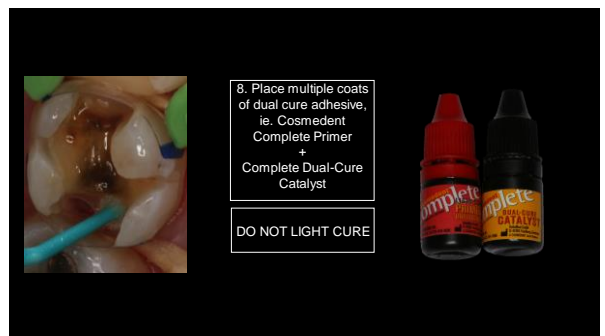
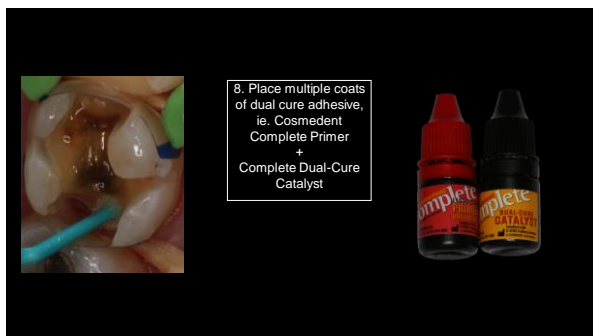
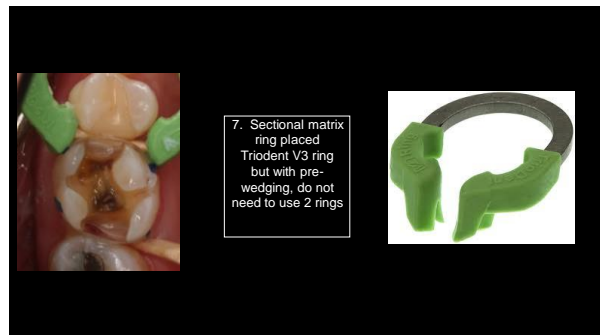
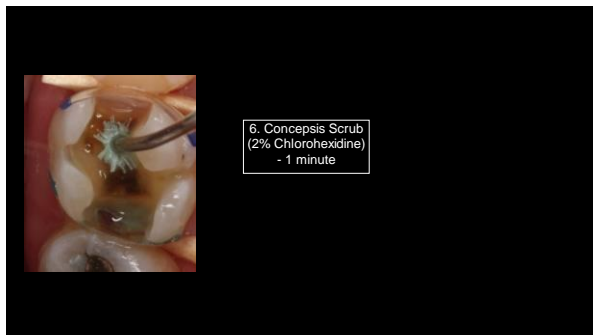
4. Contour matrix bands placed. Note distal wedge position.

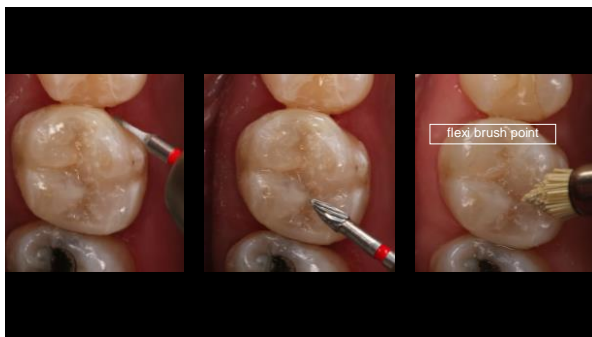
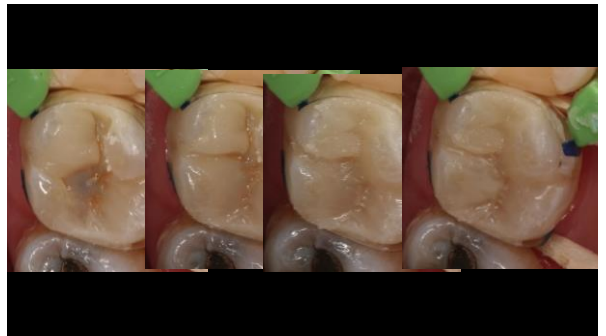
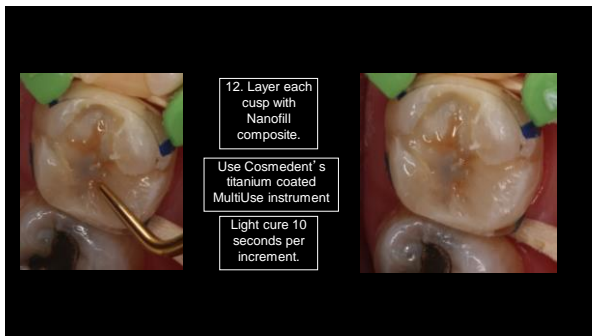
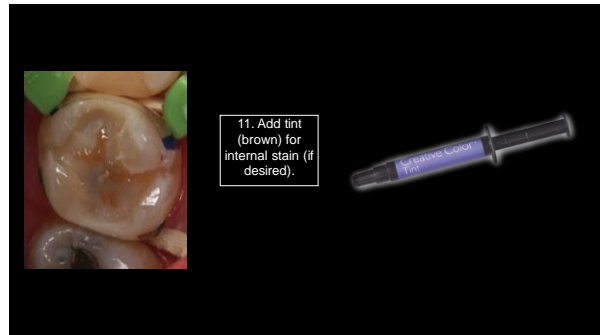
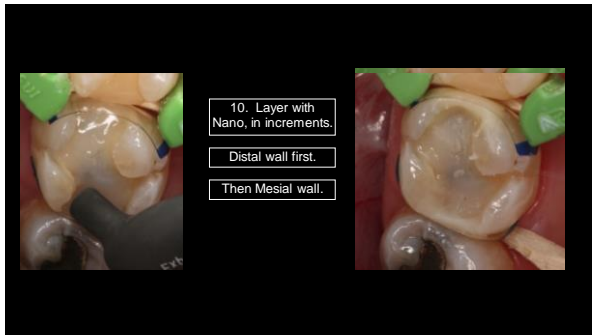


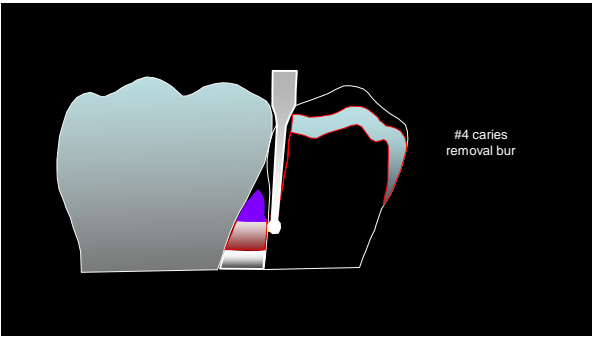
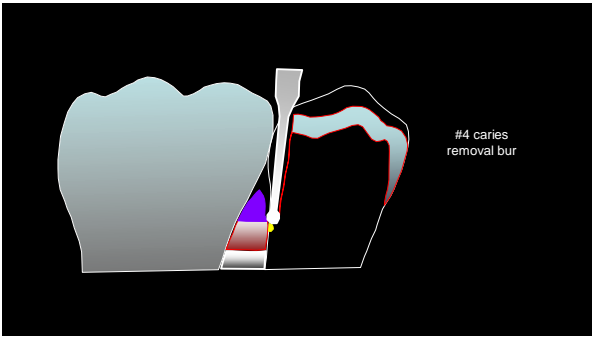
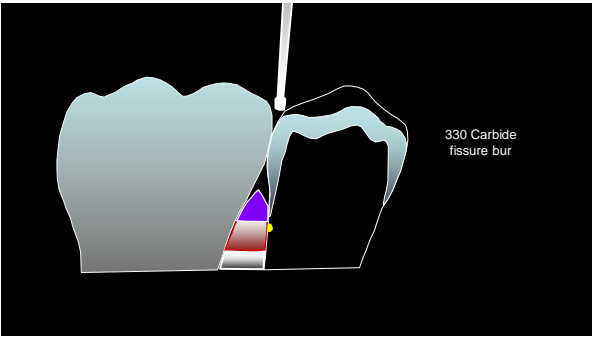
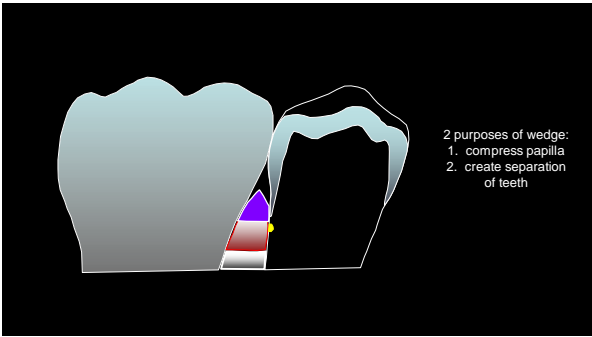
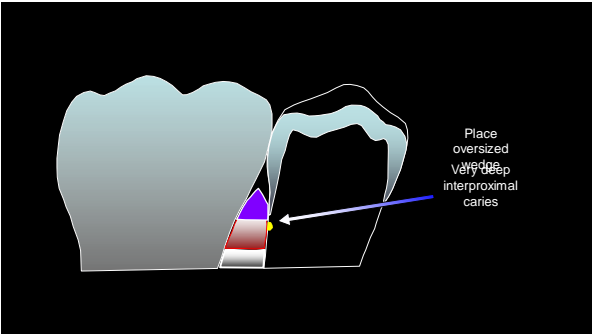
5. Decision to make:  
1) Total Etch or  
2) Self Etch

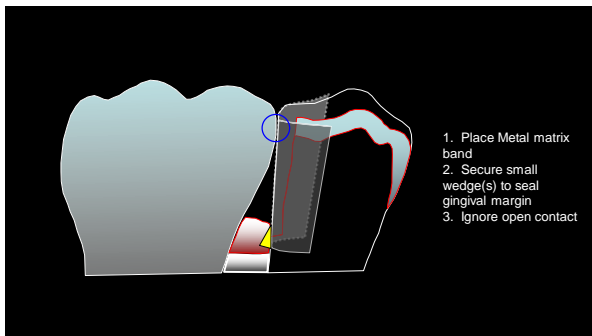
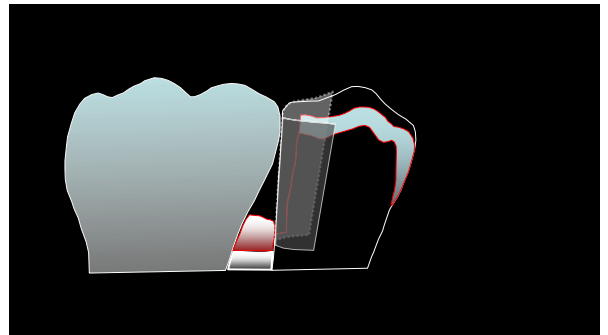
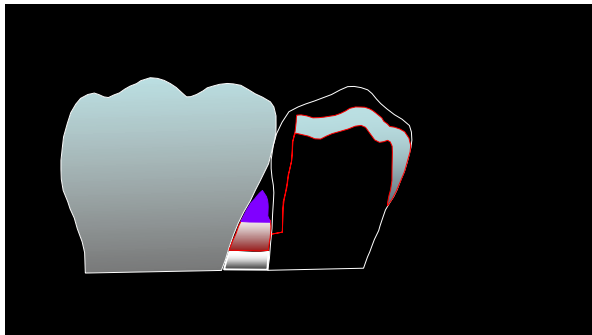




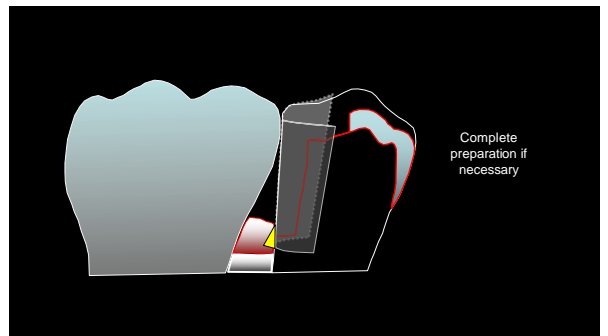




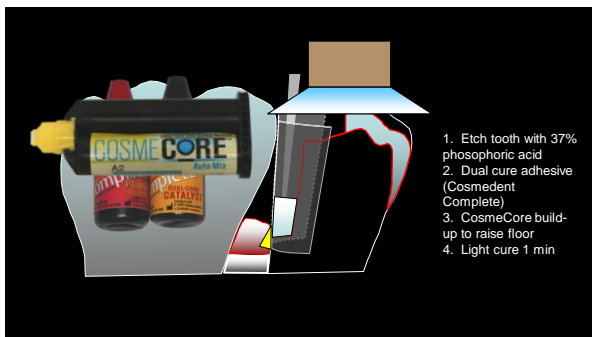




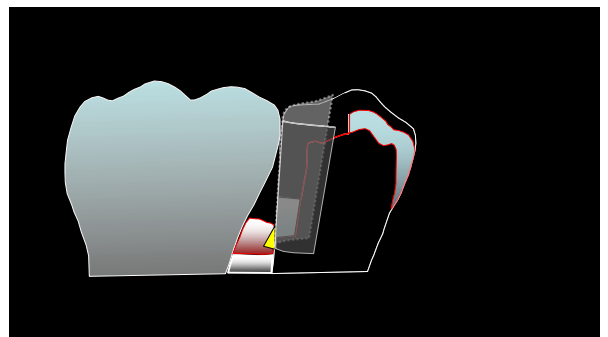
1. Place Metal matrix band
2. Secure small wedge(s) to seal gingival margin
3. Ignore open contact

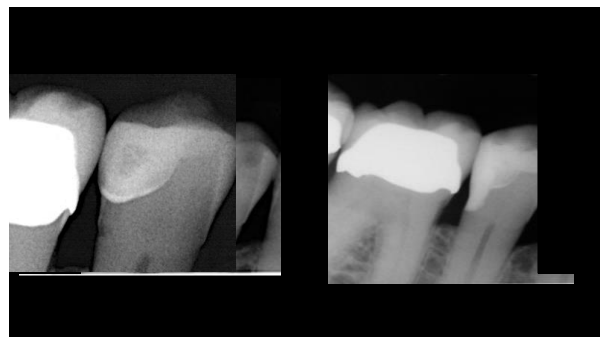
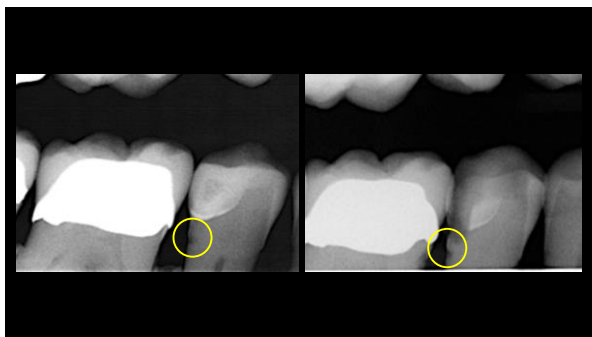
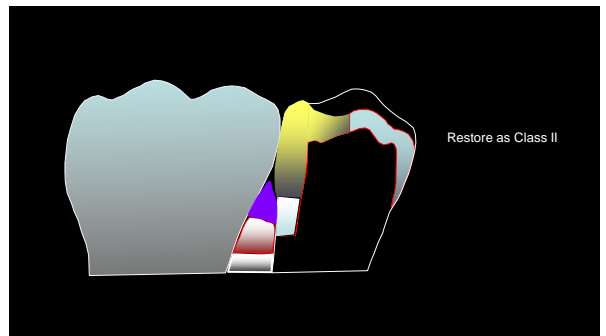
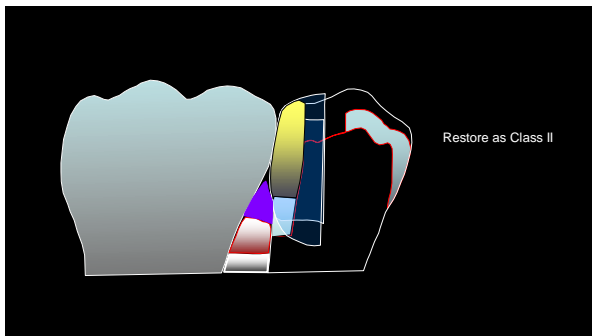
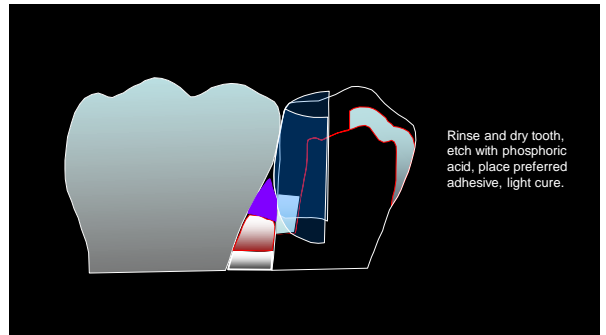
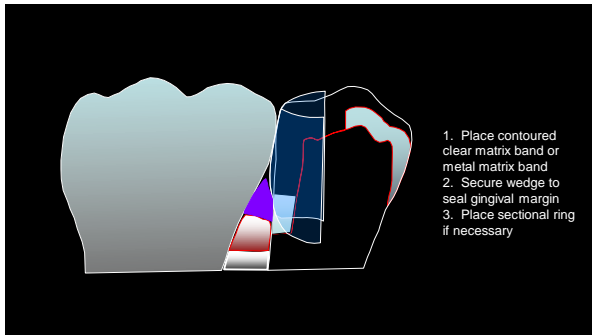


Complete preparation if necessary



1. Etch tooth with 37% phosphoric acid
2. Dual cure adhesive (Cosmedent Complete)
3. CosmeCore build-up to raise floor
4. Light cure 1 min







Follow me on  
[www.facebook.com/HartliebSeminars](http://www.facebook.com/HartliebSeminars)



[www.HartliebSeminars.com](http://www.HartliebSeminars.com)