

# Porcelain Fused to Metal Repair



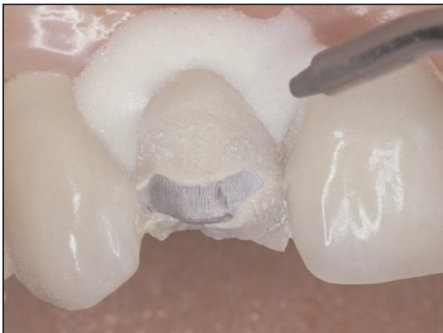
Step 1



GINGA-Guard™



Step 2 Application of  
GINGA-Guard™



Step 3 Micro-Etching



Step 4 Cosmedent Clear  
Hydrofluoric Acid on both  
porcelain and metal. Etch for  
5-6 minutes. Rinse away with  
copious amounts of water



Step 5 Etched repair area.



Step 6 INSURE® Silanator  
on porcelain only for  
30 seconds



Step 7 POWERBOND™ primers 2A  
and 2B mixed. Apply 2 to 3  
coats on metal only. Air Dry.

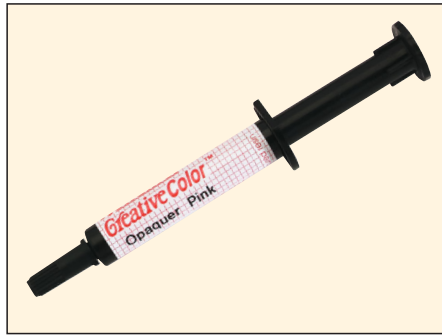


Step 8 POWERBOND™ bonding  
agent 3A on both metal and  
porcelain.

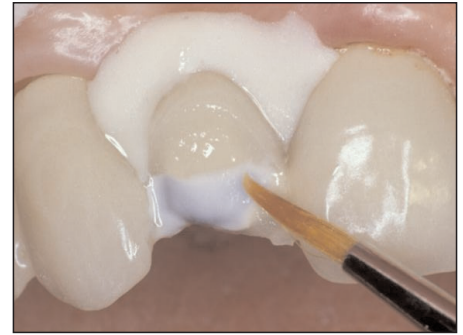
# Porcelain Fused to Metal Repair



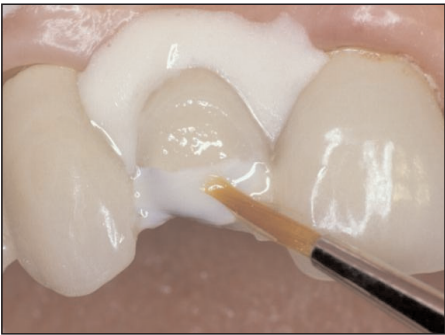
**Step 9** Light cure bonding agent:  
(20 seconds)



**RENAMEL® Creative Color Pink Opacuer**



**Step 10** Application of Creative Color Pink Opacuer



**Step 11** After applying Creative Color Pink Opacuer, light cure for 40 seconds. (If additional opaquing is required, apply another coat.)



**Step 12** Application of RENAMEL® Universal Microhybrid



**Step 13** RENAMEL® Universal Microhybrid after light curing for 60 seconds.\*

\*NOTE: If slight greyness persists, apply additional opaquer in the same shade as RENAMEL® Universal Microhybrid.



**Step 14** Application of Light Grey tint to create translucence



**Step 15** Tint cured after 40 seconds



**Step 16** Application of RENAMEL® Microfill same shade as Hybrid

# Porcelain Fused to Metal Repair



**Step 17 Microfill cured after 60 seconds**



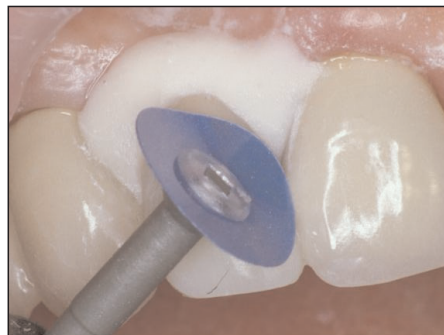
**Step 18 Contouring using bur of choice**



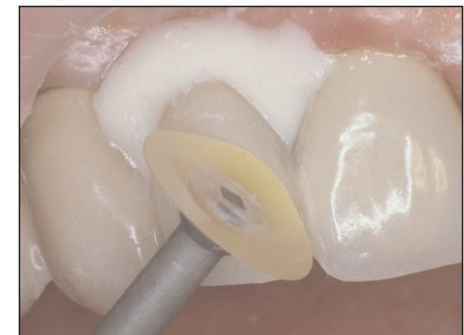
**Step 19 Characterization: Medium FlexiPoint**



**Step 20 Super Fine FlexiPoint**



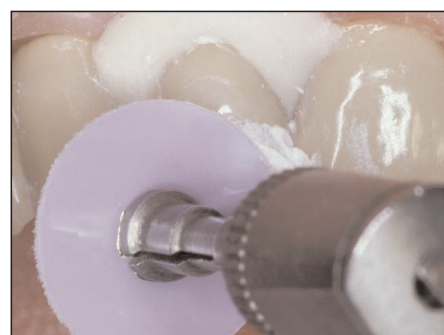
**Step 21 Medium FlexiDisc Plastic Center or FlexiDisc Mini Center**



**Step 22 Fine FlexiDisc Plastic Center or FlexiDisc Mini Center**



**Step 23 Superfine FlexiDisc Plastic Center or FlexiDisc Mini Center**



**Step 24 Enamelize™ and FlexiBuff™**



**Step 25 Finished case**

# Porcelain Fused to Metal Repair

## Materials List for Porcelain Fused to Metal Repair

1. GINGA-Guard®
2. Cosmedent's clear hydrofluoric acid
3. Insure® Silanator
4. PowerBond® bonding system
5. Creative Color® Pink Opaque
6. Renamel® Universal Microhybrid
7. Creative Color® Opaquer (if needed)
8. Creative Color® Tints if you need to tint
9. Renamel® Microfill
10. Medium FlexiPoint® / FlexiCups® / Wheels®
11. Super Fine FlexiPoint® / FlexiCups® / Wheels®
12. FlexiDisc® System either Plastic Center or FlexiDisc® Mini Center
13. Enamelize® polishing paste with FlexiBuffs®
14. #1 Brush®

## Instruments for material placement:

1. 8A (Short Bladed) Titanium Coated Cosmedent Placement instrument®
2. 8AL (Long Bladed) Titanium Coated Cosmedent Placement instrument®
3. BBA (Broad Blade Applicator) Titanium Coated Cosmedent Placement instrument®

## Instruments for interproximal and sub-gingival contouring:

1. IPCT (Short Bladed Extra-thin) Titanium Coated Cosmedent instruments®
2. IPCL (Long Bladed Extra-thin) Titanium Coated Cosmedent instruments®

## Instruments for placing incisal grooves into body material prior to addition of incisal material:

1. Multiuse Titanium Coated Cosmedent instrument®

## Application of Opaquers:

1. #1 or #3 Cosmedent Brush®

## Application of Tints:

1. #1 Cosmedent Brush®